

TABLES: TOPS & BASES

Nardi Table Top & Base Fit Guide

		24"	32"	36"	24"x32"	48"x32"	32" Dia	30" Dia
SINGLE DINING HEIGHT	ESPLANADE SELF LEVELING	★	★		★		★	★
	FIORE	★	★		★		★	★
	FLUTE TILTING	★					★	★
	FRASCA MAXI		★	★			★	★
	FRASCA MINI	★	★		★		★	★
	IBISCO TILTING	★	★		★		★	★
	TERRACE SELF LEVELING	★	★		★		★	★
	TRAIL 27 SELF LEVELING	★	★		★		★	★
	TRAIL 30 SELF LEVELING			★				
DOUBLE DINING HEIGHT	SCUDO TILTING					★		
	TRAIL SELF LEVELING					★		
SINGLE BAR HEIGHT	FIORE	★			★		★	★
	FRASCA TILTING	★			★		★	★
	IBISCO TILTING	★			★		★	★
	TRAIL 27 SELF LEVELING	★			★		★	★
DOUBLE BAR HEIGHT	TRAIL 30 SELF LEVELING		★	★				
	SCUDO TILTING					★		

BASES CUT DOWN TO COUNTER / LOUNGE HEIGHT FOR \$40 NET

BUM COMMERCIAL FURNITURE will provide the necessary hardware if both top and base are purchased on the same Purchase Order.

TABLES: TOPS & BASES



Teak is very durable and has its own natural oils which prevent water and moisture from penetrating the wood. It will develop a warm gray patina over time or it can be oiled annually to maintain the new wood look. Teak requires virtually no maintenance and can be left on the patio during the summer months.

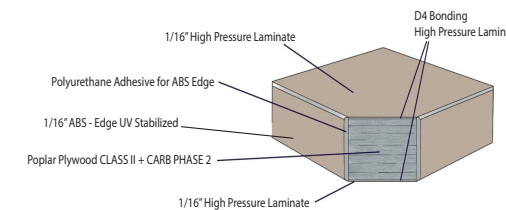
Solid Natural Teak • 8 pre-drilled stainless steel inserts to connect to Nardi table bases • Tops are 1" thick



See Table Top & Base Fit Guide Pg.100

CODE + SIZE	WEIGHT
#MT-TEAK24SQ 24"	13 lbs
#MT-TEAK32SQ 32"	23 lbs
#MT-TEAK36SQ 36"	30 lbs
#MT-TEAK24X32 24"x32"	17 lbs
#MT-TEAK48X32 48"x32"	36 lbs
#MT-TEAK 30RD 30"	15 lbs

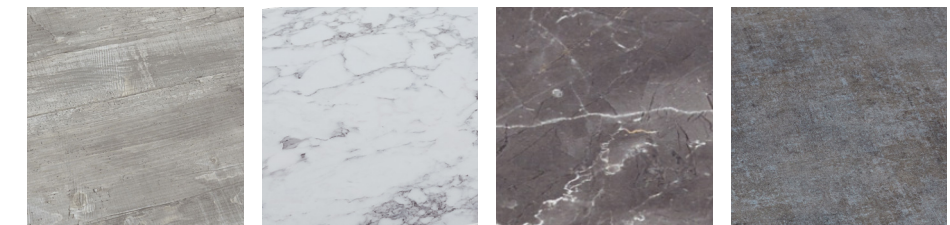
Severin Exteriolit Classic



See Table Top & Base Fit Guide Pg.100
Poplar veneer marine grade plywood board with 1/16" HPL coating on both sides • Moisture resistant
Self tapping screws included • Tops are 1.2" thick • UV protected

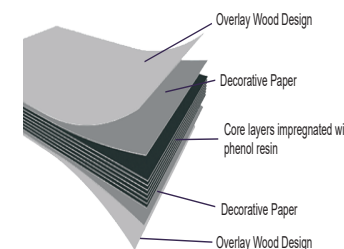
ADD NET \$30 FOR UMBRELLA HOLE

SIZE	WEIGHT
#24SQ	14 lbs
#32SQ	25 lbs
#36SQ	32 lbs
#24x32	19 lbs
#48x32	38 lbs
#30RND	20 lbs



ATRIUM GREY MARBLE CARRARA MARBLE PIETRO SILVER FABRIC

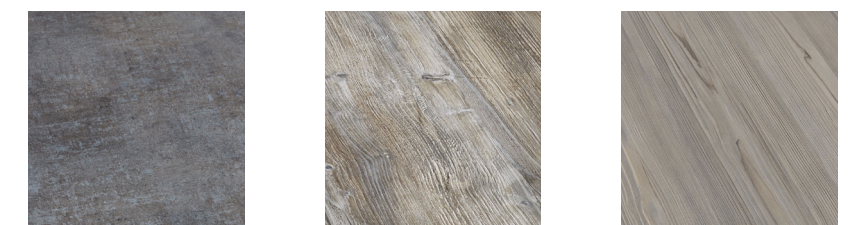
Severin Compact HPL



See Table Top & Base Fit Guide Pg.100

High pressure laminate top • 8 pre-drilled stainless steel inserts to connect to Nardi table bases
Tops are laminate and slightly textured to reduce sliding • Tops are 1/2" thick • UV protected

SIZE	WEIGHT
#24SQ	12 lbs
#32SQ	22 lbs
#36SQ	22 lbs
#24x32	15 lbs
#48x32	31 lbs



SILVER FABRIC VINTAGE FLEETWOOD VINTAGE PINE