

FEATURES

- 4 Novelty Baskets included
- Sliding glass lids
- Bumper Guard
- Mobility casters for effortless relocation and cleaning
- Easy to clean
- Temperature Range: -18C to -22C / -0.4°F to -7.6°F

CONSTRUCTION

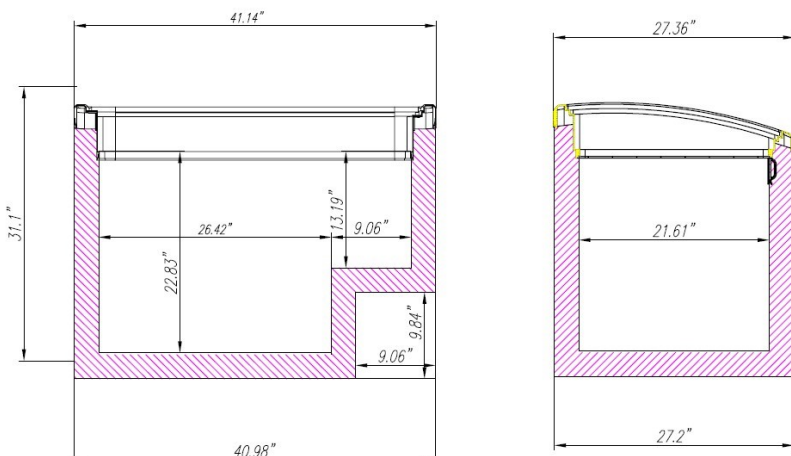
- Cabinet walls are 2.75" (70mm) thick
- White exterior with grey and white lid frame
- White aluminum and synthetic interior
- Adjustable thermostat
- ETL and NSF approved
- R290 refrigerant

WARRANTY

- Compressor 5 years
- Parts & Labor 1 years
(wearable parts and accessories not included)



CEAFT50 Shown



Celcold Essential angle top freezers are the ultimate merchandiser for novelty ice-cream and frozen food products. Ideal for convenience stores, cafeterias and supermarkets. The curved glass and angled top enhance visual presentation and maximize impulse purchases of frozen foods. Novelty Baskets are included for displaying your product.

Model #	Net Capacity	Width	Depth	Height	Width Internal	Depth Internal	Height Internal	Basket Capacity	Shipping Weight
CEATF40	8.5 cu. ft. 240 litres	41\" 1045 mm	27\" 686 mm	34\" 864 mm	35.5\" 901 mm	21.6\" 549 mm	22.8\" 580 mm	3	128 lbs 58 kg
Refrigerant	Power	Current	Voltage	Phase	Hertz	Plug	Circuit	Certification	
R290	1/5 hp	2.3 A	110 V	Single	60	Nema 5-15 	Dedicated circuit required		